

# CONSTRUCTION LEADERSHIP COUNCIL

## The Quarterly Progress Report



November 2010  
Volume 2, Issue 3

### 2010 CLC Steering Committee

*Chairman:* Brian Roth, JE Dunn

[brian.roth@jedunn.com](mailto:brian.roth@jedunn.com)

*Vice Chairman:* Josh Vogel, HNTB

[jvogel@hntb.com](mailto:jvogel@hntb.com)

*Secretary:* Katie Kies, The Weitz Company

[katie.kies@weitz.com](mailto:katie.kies@weitz.com)

*Treasurer:* Mike Swift, Thomas McGee, L.C.

[mswift@thomasmcgee.com](mailto:mswift@thomasmcgee.com)

*Committee Members:*

JoLynne Bartolotta, Fogel-Anderson

[jolynne@fogel-anderson.com](mailto:jolynne@fogel-anderson.com)

Angie McElhaney, Marks Nelson

[amcelhaney@marksnelsoncpa.com](mailto:amcelhaney@marksnelsoncpa.com)

Travis Schoenfelder, RSC

[Travis.schoenfelder@rscrental.com](mailto:Travis.schoenfelder@rscrental.com)

Nicole Anderson

[n-anderson@live.com](mailto:n-anderson@live.com)

*Immediate Past Chair:*

Chris Vetter, Concorp, Inc.

[chris.v@concorpinc.com](mailto:chris.v@concorpinc.com)

*AGC Representative:* Tiffany Moore

[tmoore@buildersassociation.com](mailto:tmoore@buildersassociation.com)

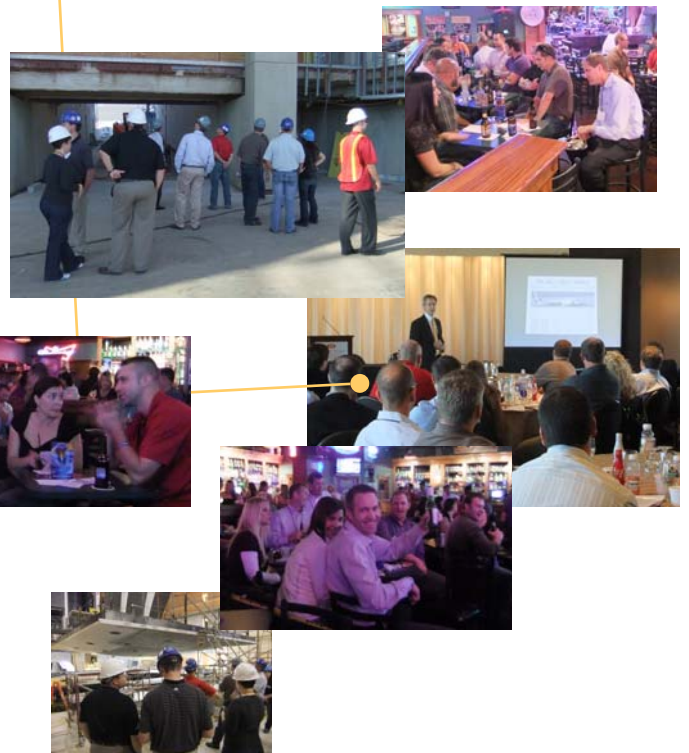
## 2010 Working Weekend Draws Record Attendance!

The 2010 CLC Working Weekend set a new record for attendance with nearly 100 registered attendees, guests, and speakers. The annual gathering of CLC members from across the country drew attendees from as far away as Hawaii, Idaho, Texas, and Pennsylvania. The networking couldn't have been better and the weather was perfect for 2 ½ days of jobsite tours, seminars, and social time at the Power & Light District.

Tours of the Christopher S. Bond Bridge and the Kauffman Center for the Performing Arts showcased premiere construction projects in both the commercial and heavy/highway markets. Professional speakers addressed the challenges of effectively communicating among various generations and during a crisis situation.

Ken Simonson, Chief Economist with the AGC, shared his outlook on the construction industry and materials markets over lunch on Friday. The final speakers were front and center for breakfast on Saturday morning. First up was a guest speaker who shared the details of the remarkable reconstruction of the I-35W Bridge in Minneapolis and how the companies involved went above and beyond to help the Twin Cities recover from the tragedy of the bridge collapse. For those that stayed until the very end, Tary Carlson, past National Steering Committee member, reviewed a long list of free software tools that made sure the last presentation was worth the wait.

Evening activities at *Raglan Road* and *Howl at the Moon* were lots of fun and provided the perfect backdrop to the event. Special thanks goes to Kansas City Chapter Steering Committee members Brian Roth, Josh Vogel, and Mike Swift, AGC representative Tiffany Moore, and the local member of the National Steering Committee, Andy Huber, for serving on the WW planning team.



## Professional Development

### **Wyandotte County Improvements Brent Miles, President WYEDC**

The final educational event for 2010 was held at Taqueria Mexico on November 10<sup>th</sup> and presented an opportunity to learn about the renaissance of the Wyandotte County region and the philosophies that continue to draw investment, business, and people **WEST!**

Brent Miles, President of the Wyandotte County Economic Development Council, did a great job of recapping the details of projects across the entire region and the focus behind each one. With an amazing number of statistics, dollar values, and lists of upcoming projects, his dedication and passion were apparent.

With 92 business partners focused on supporting the strategic development of key projects while maintaining a backlog of next generation construction opportunities, there seems to be little standing in the way of future chapters in this success story.

## 2010 Working Weekend Sponsors

The Kansas City Chapter-CLC would like to express their appreciation to the following sponsors who were instrumental in the success of the 2010 Working Weekend.

Kansas City Chapter-AGC  
The Builders' Association  
AGC of Kansas  
AGC of Missouri  
Heavy Constructors  
JE Dunn Construction  
MoDot/KC ICON  
LaFarge, North America  
Thomas McGee

## Working Weekend 2011

The location of Working Weekend 2011 was announced during this year's event in Kansas City. All the "cool kids" will be headed to Oklahoma City next fall, so polish your boots and prepare to hit the turnpike. *Think they can top KC?*

## Positions open on the 2011 Steering Committee

The Kansas City Chapter has several positions open on the Steering Committee for 2011. Participating on the committee provides an opportunity to practice key leadership skills, contribute to the overall goals of the organization, and represent your company on an industry board.

If you are interested in one of the open positions, start by submitting an application. Visit the CLC webpage or email [clckinfo@gmail.com](mailto:clckinfo@gmail.com) to request an application.

The Steering Committee is made up of 5 officers (Chairman, Vice-Chairman, Secretary, Treasurer, and Immediate Past Chair) and 5 at-large members. The at-large members head subcommittees to organize membership recruitment, professional education, social/networking events, community service opportunities, and to produce the newsletter.

The Steering Committee meets once a month to review subcommittee reports and plan events. They also attend AGC and Builders' Association events in addition to the CLC events scheduled throughout the year.

The term of office for an at-large member is two years. In addition, the officer positions each have a term of one year. There is no age limit on membership in the CLC; many past Steering Committee members are still active in the organization. If you'd like to learn more, contact one of the past leaders and ask about their experience.

Applications are due by November 22, 2010.

## 2010 Wrap Party and Holiday Happy Hour

Come celebrate a record-setting Working Weekend and reaching another milestone in membership. How could 2010 wrap up without marking such a great year and thanking the Steering Committee members and their teams who have coordinated 10 years of success in Kansas City?

Immediately following The Builders' Association Holiday Party on December 10, 2010, the CLC Wrap Party will be held at Paul & Jack's in North Kansas City. Visit the CLC webpage to get a ticket for The Builders' party and RSVP for the CLC Wrap Party.

Happy Holidays!

## The Newsletter has a Name!

Did you notice? The brand-new name for the Kansas City Chapter-CLC newsletter is ***The Quarterly Progress Report***. The winning name was submitted by Josh Vogel, the incoming Chair of the Kansas City Steering Committee. When he's not thinking up clever newsletter names, he can be found working for HNTB as an in-house construction manager, kicking around Johnson County with his wife Tiffany, and watching Phineas and Ferb cartoon marathons with his boys. Thanks, Josh, for the excellent title!

## Mother Nature Gets the Best of the Shotgun Tournament (Again!)

The 2nd Annual Shotgun Event was renamed this year with the addition of sporting clays to the original line-up of trap and skeet. 43 shooters got about half-way through the event before the skies opened up and demonstrated exactly what "torrential" means. After a short (very short) discussion of whether to wait out the storm or tap the kegs, the dinner and social portion of the event began a little early. Oklahoma Joe's barbeque is always a favorite and there was very little left when the most dedicated of the group called it a night.

Scores were calculated from the completed rounds-thanks to Katie Kies for working the numbers! The top three scores of each category earned prizes: trail cameras for first, hunting coat and hat set for second, and a gear bag full of supplies for third.

### 2010 Winners

#### Sporting Clays

1. Phil Gibbs, Turner Construction
2. Kevin Raussen, Turner Construction
3. Dan Reicht, Midland Steel

#### Trap

1. Justin Garcia, Desco Coatings
2. Brian Finnegan, Firebaugh Construction (tie)
3. Blake Wood, Desco Coatings (tie)

#### Skeet

1. Dave Williams, L.G. Barcus
2. Josh Shorley
3. David Grossman, L.G. Barcus



## Membership Referrals

The CLC membership application now has a place to identify current members who are helping to grow the membership. Did someone twist your arm, drag to you an event, or otherwise entice you to join the CLC? We want to know who those awesome people are!

A drawing will be held in late 2011 for a great prize. Something special will be planned for frequent recruiters. Watch for more information on this program!

## Facebook us!

Become a fan of the Construction Leadership Council of the AGC-KC page. Get details of upcoming events and other chapter information.



## Another Great Summer of Baseball!

Baseball season may have given way to football season, but the Royals and T-Bones games made for another great summer of CLC sports events. Traditionally hot weather made sure the cool beverages are perfectly suited for the good food and great people. If you haven't attended a CLC tailgating event make sure 2011 is the year!



It's really hard to miss the stadium project-whether you're driving by or watching the news. With earthwork done under the lights and webcams providing 24-hour video for the insomniac

construction junkie in all of us, this project was just begging for a CLC visit. On a perfect fall afternoon, CLC members and guests were hosted by Turner Construction and got a first-hand look at the bones of a premiere professional soccer facility.

The team of superintendents has their work cut out for them with an international soccer match already on the calendar. The schedule has driven creative project management with multiple subcontractors performing work on different levels, 2-shift work, and intense site coordination. With a design almost totally focused on the spectator experience, the tour group agreed that a return trip to see a game in the completed facility was in order. Watch the calendar in 2011 for a chance to compare the before photos to the real thing.



The tour group is staking out the perfect spot to watch a game.....did they call this the rowdy section?



Happy hour after the tour at Wild Bill's at The Legends. Props to the accountants for closing the event down!



## The Subcommittees Need You!

The 2011 Steering Committee will soon be formed and planning will begin for events and activities in the coming year. Each subcommittee chair will need help-are you up for the job?

There are five subcommittees: Membership, Newsletter, Professional Development, Social Events, and Community Service. You can give a little time or a lot of muscle, but either way, you can help.

If you'd like to help, contact a steering committee member or email [clckinfo@gmail.com](mailto:clckinfo@gmail.com).



## Who's Who in the CLC

CLC membership is made up of individuals from the companies listed below. These companies support the CLC in a variety of ways, perhaps most importantly by encouraging their staff to get involved. Their support is invaluable. If your company would like to be a part of the CLC, please contact a Steering Committee member or email your interest to [clckinfo@gmail.com](mailto:clckinfo@gmail.com). As they say, "All the cool kids are doing it!"

A.L. Huber, Inc.  
 A.T. Switzer Painting Company, Inc.  
 Allied Construction Services  
 Baker Environmental Consulting, Inc.  
**CBIZ MHM, LLC**  
 C.S. Humphrey  
 Central States Contracting Services, Inc.  
 Collins & Hermann, Inc.  
 Concorp, Inc.  
 Cornell Roofing & Sheet Metal  
 Cretcher Heartland  
 Delta Innovative Services Inc.  
 Demolition Interior Specialists, Inc.  
 Desco Coatings, Inc.  
 E & K of Kansas City, Inc.  
 E.J. Cody Company, Inc.  
 Firebaugh Construction, Inc.  
 Fogel-Anderson Construction Co.  
 George J. Shaw Construction Co.  
**HarenLaughlin Construction**  
 Hayes Drilling  
 Holmes Drywall Supply  
 Insurance & Benefits Group  
 JE Dunn Construction Company  
 Kansas City Structural Steel, Inc.  
 Larkin Contracting, LLC  
 Lockton Companies, LLC  
 Marks, Nelson, Vohland, Campbell, Radetic LLC  
 McCownGordon Construction  
**McTech Corporation-Midwest Division**  
 Midwest Mechanical Contractors  
 Molin Concrete Products Company  
 Murray Company

◆ Indicates Central Chapter members  
 New members are in bold italics

Overland Park Heating & Cooling Inc  
 P.M. Contracting, Inc.  
 PCI Dahmer  
 Pearce Construction Company  
 Polsinelli & Shughart  
 ◆Professional Contractors & Engineers  
 Rau Construction  
 ◆River City Construction, LLC  
 REW Materials  
 Robert E. Miller Insurance Agency  
 RSC -- Rental Service Center  
 Seiler Instrument  
 Switzer & Associates Painting Co., Inc.  
 Taylor Kelly  
 The Weitz Company  
 Thomas McGee, L.C.  
 Titan Construction Organization, Inc.  
 Total Interiors, Inc.  
**Triumph Construction Supply**  
 Turner Construction Company  
 Universal Construction  
 Walton Construction Company, LLC  
 Zurich North America

